

上海智覺光電有限公司

Operation manual



1. Machine

The mold guard machine parts are:

Camera



LED light



Computer



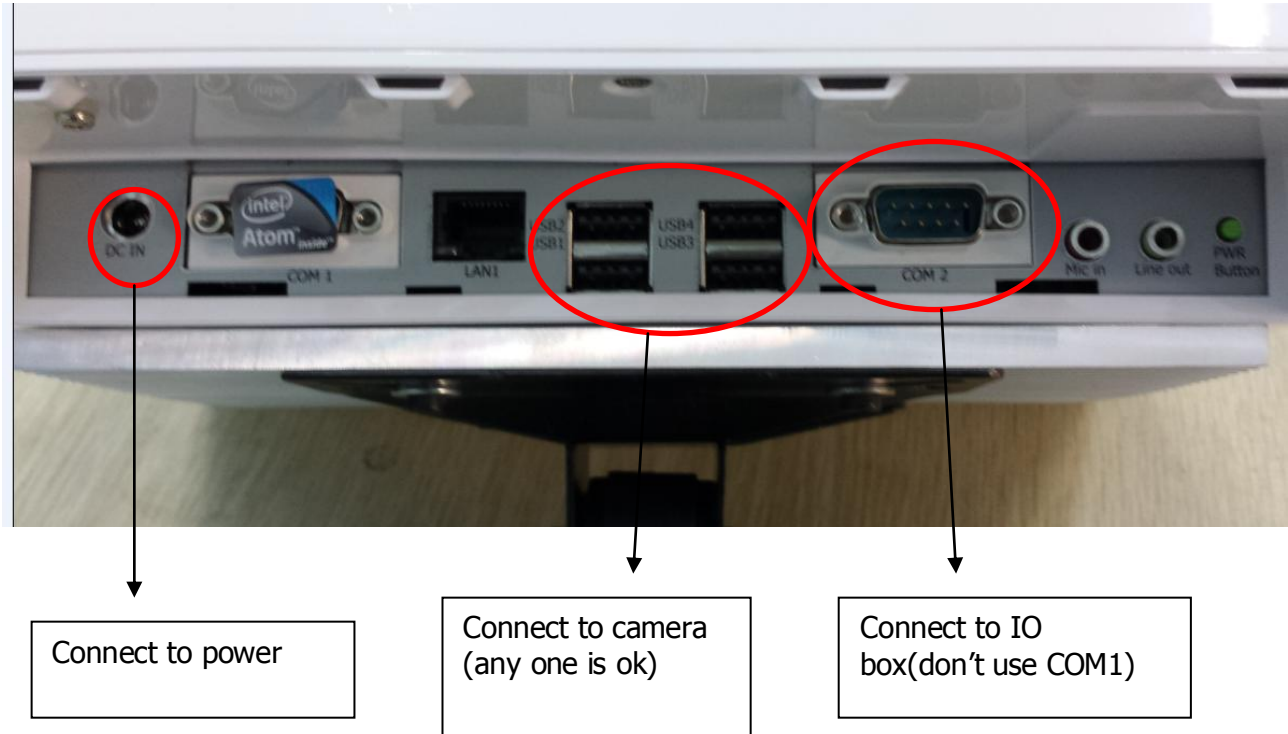
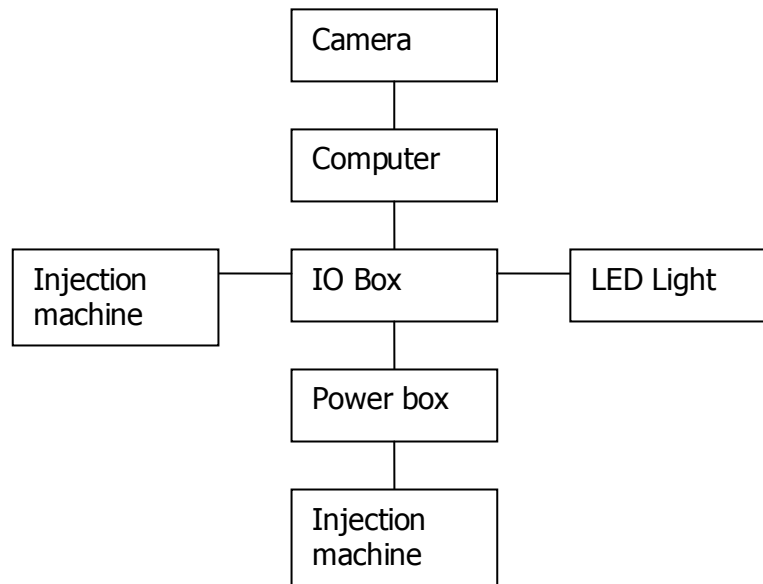
IO box

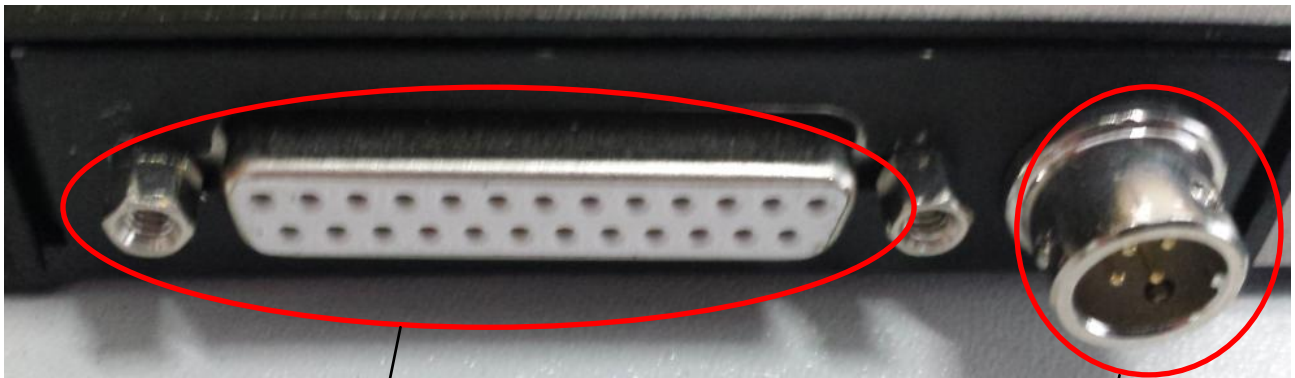


Power Box



Connection as below:





Connect to injection machine (signal cable)

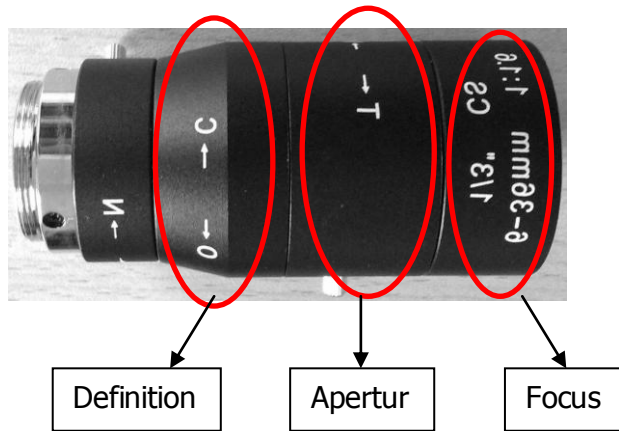
Connect to power box



Connect to LED light

Connect to computer

2 Camera setting



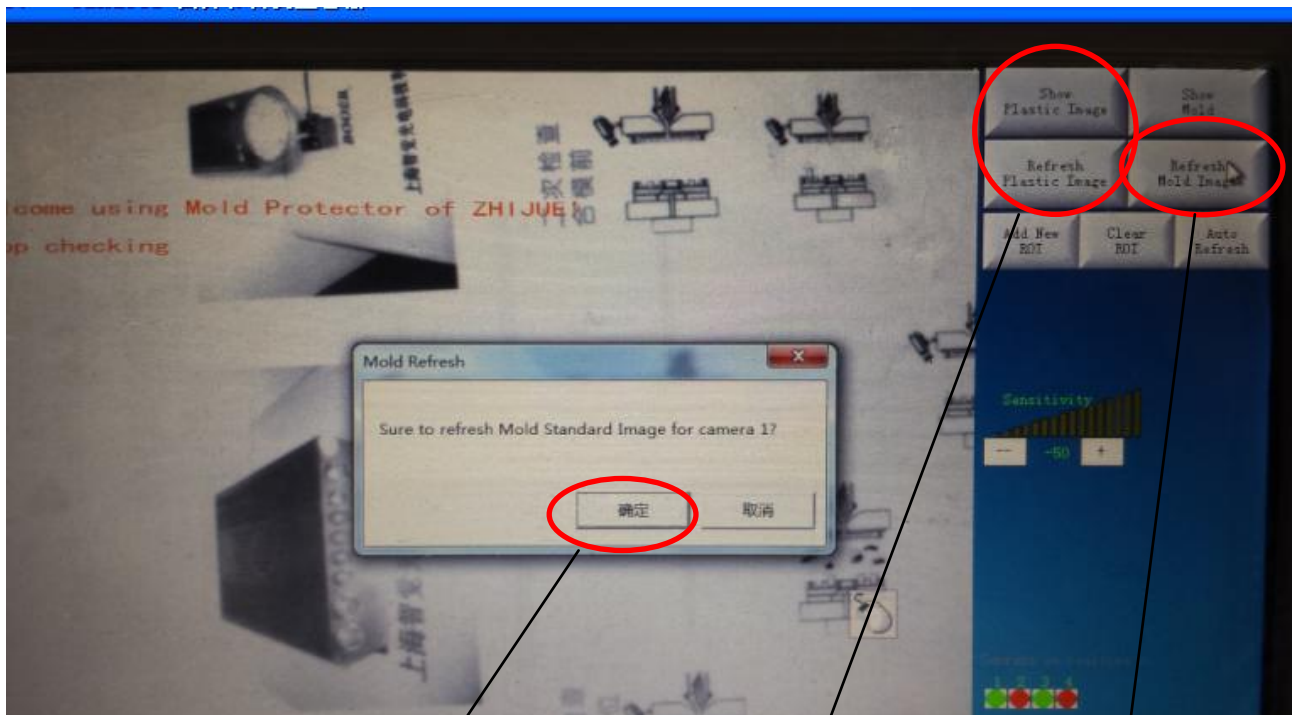
- First, adjust "Apertur" to get a proper brightness.
- Second, adjust "Focus" to get a proper picture size, best size is 2/3 of the screen.
- Third, adjust "Definition" to make the picture clear.
- Finally, tight all the screw.

3 、 Software setting

The mold guard has two step detection, first step is "plastic detection", it is to check whether the products remain on the fixed side; the second step is "mold detection", it is to check whether the products remain on the moved side.

The setting is the same, we set "mold detection" for example:

(1)Take mold (cavity) standard picture.

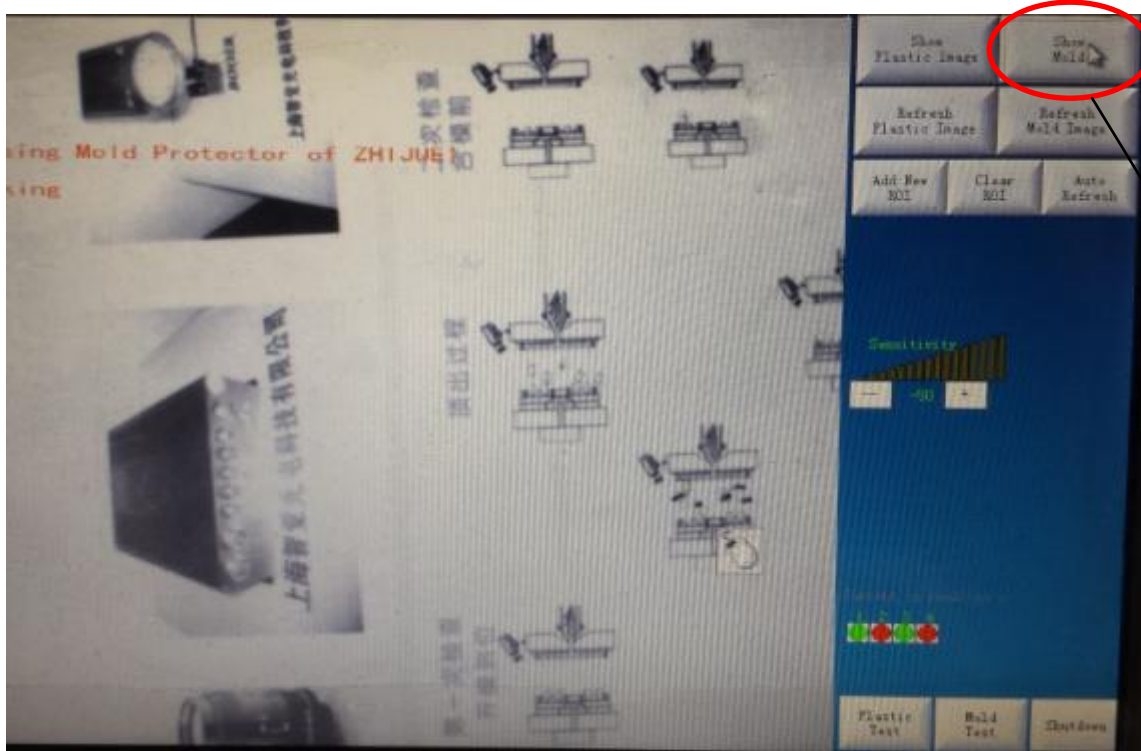


Then press "YES" to get the mold standard picture

Press "refresh mold image"

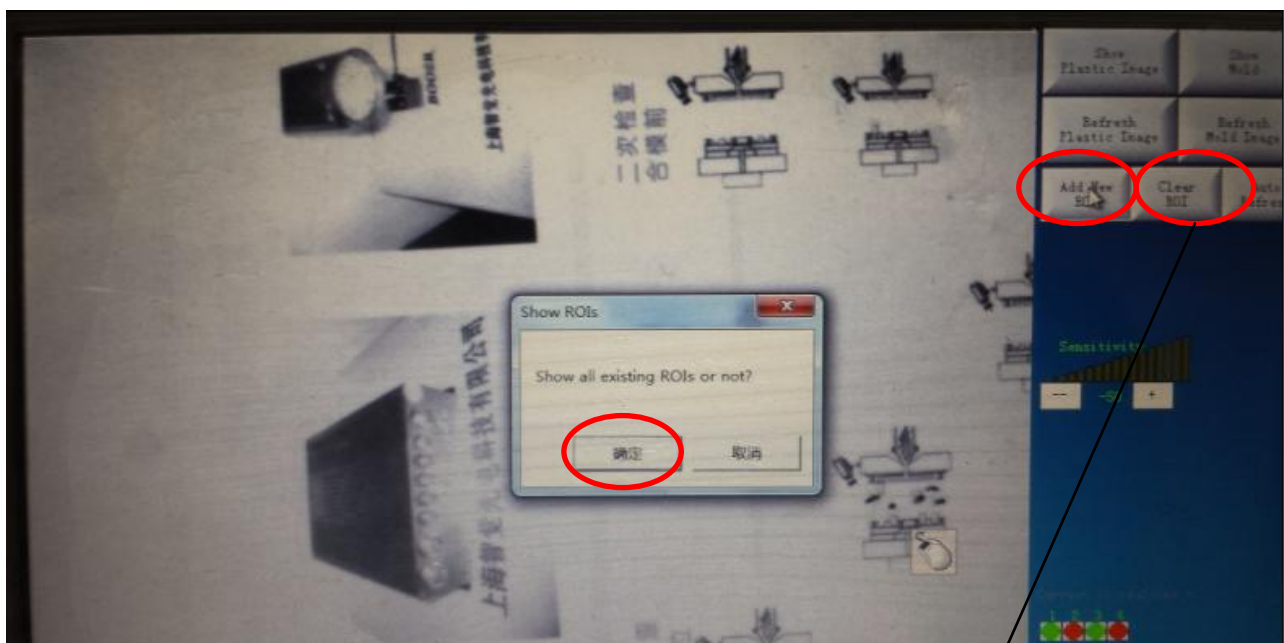
These two button for "Plastic check", if your product stick to the fixed side, you can use it

(2) Show mold standard picture

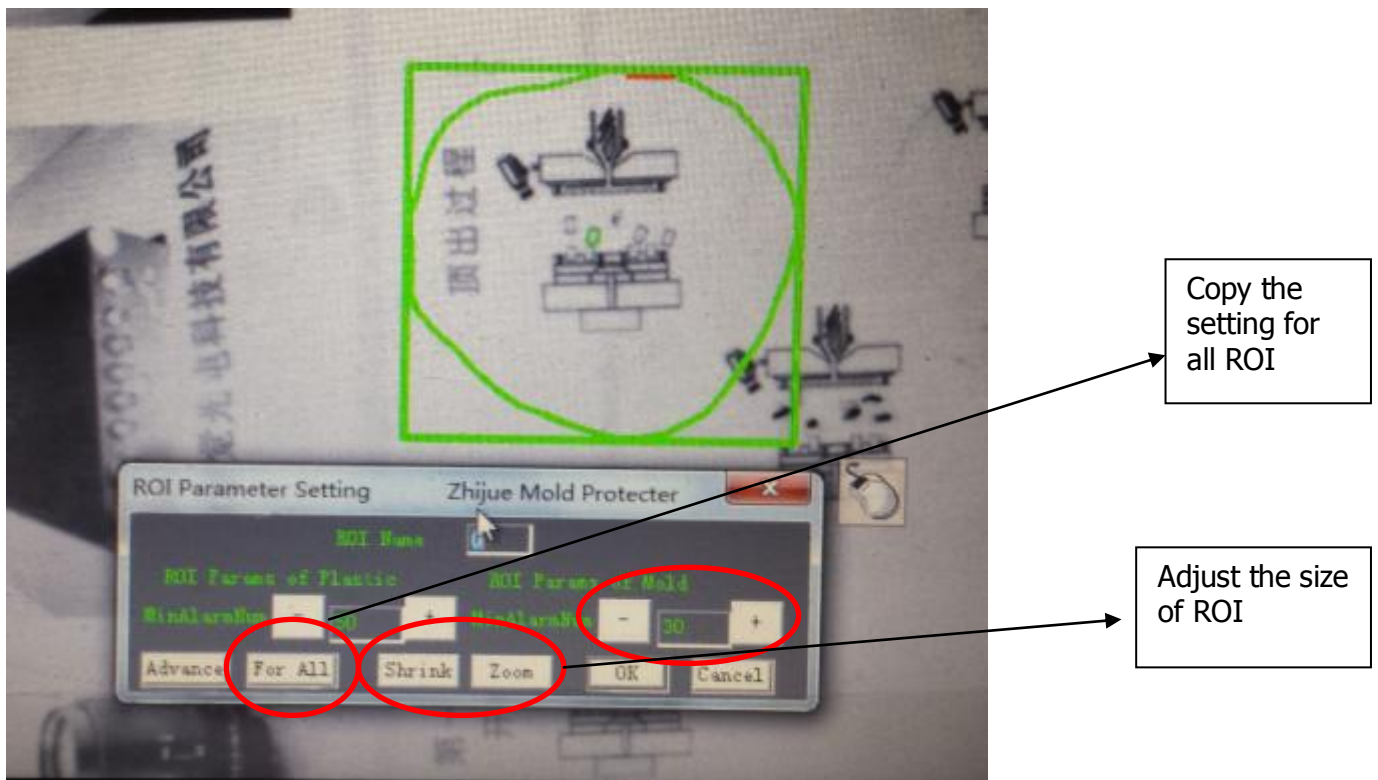


Press "show mold" to show the standard picture on the screen.

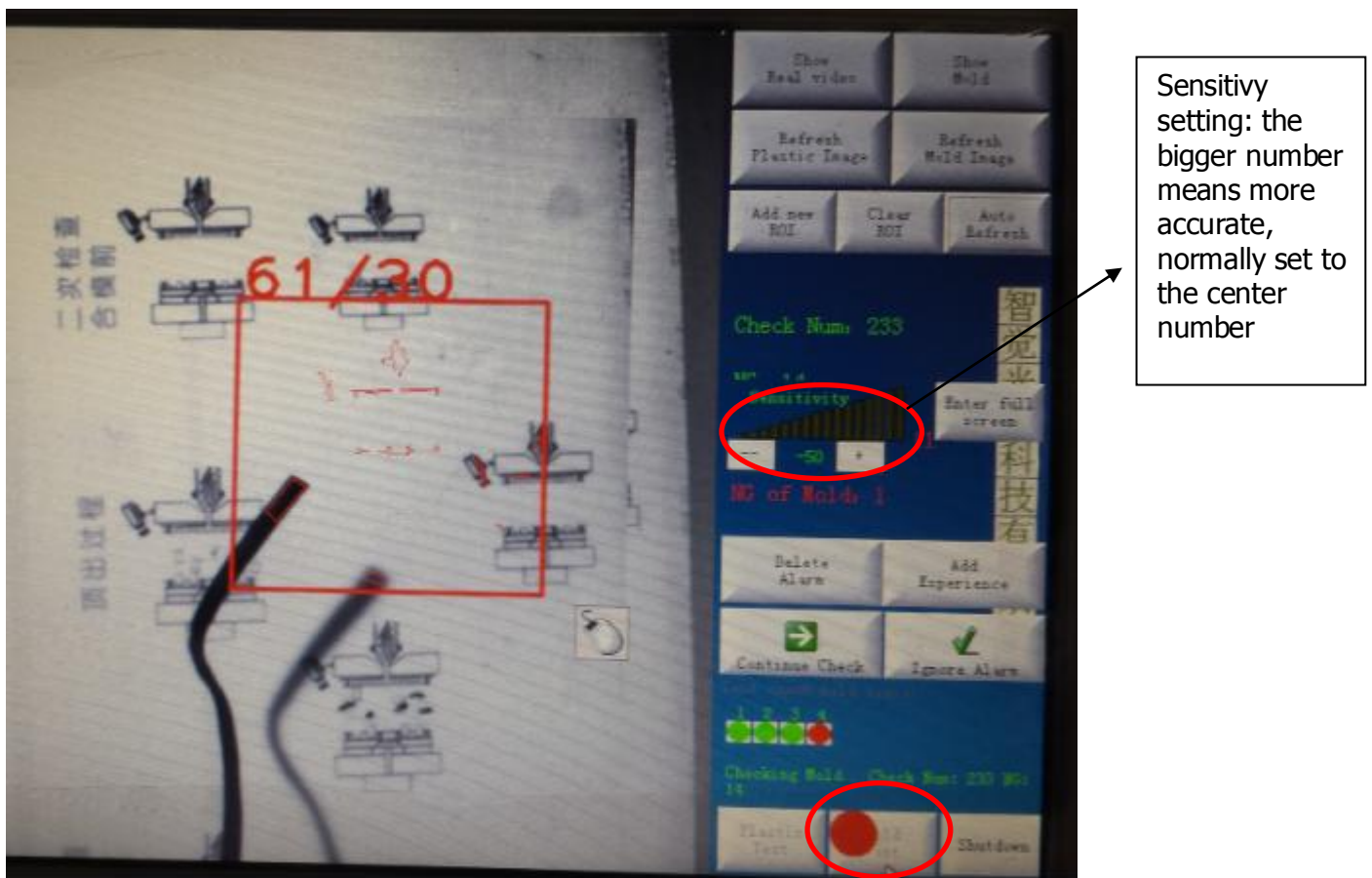
(3) Add new ROI(region of interest)



Clear ROI means click to clear all ROI you draw

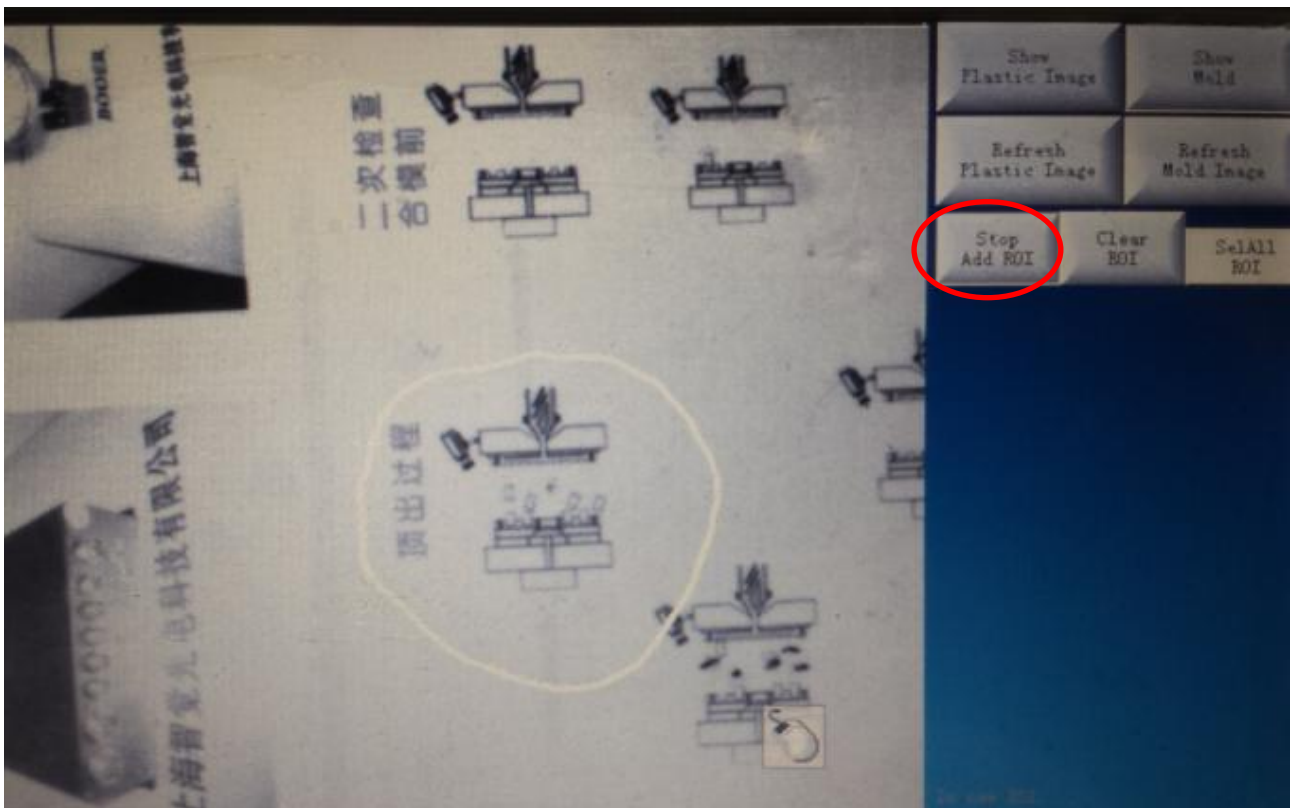


Draw the ROI for the cavity, and set the "min alarm num" for sensitive.



If you don't know how much is the best setting, put something into the cavity and press "mold test". You can see something like 61/30, 30 is the sensitive

you set, 61 is the size of the object. The sensitive must lower than the object, otherwise it will be ignore.

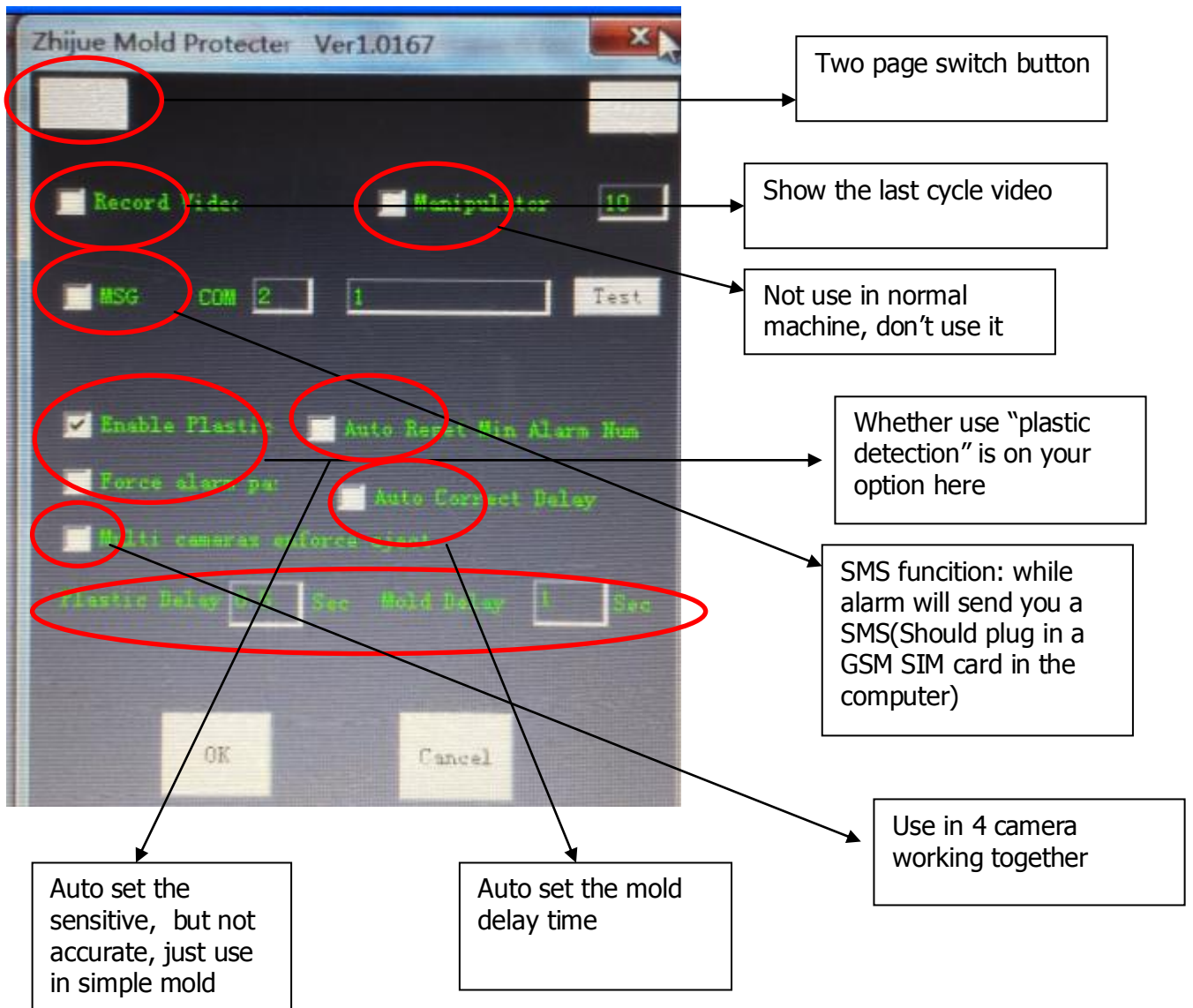


After finished, press "stop add ROI"

(4)Set the delay time for camera.

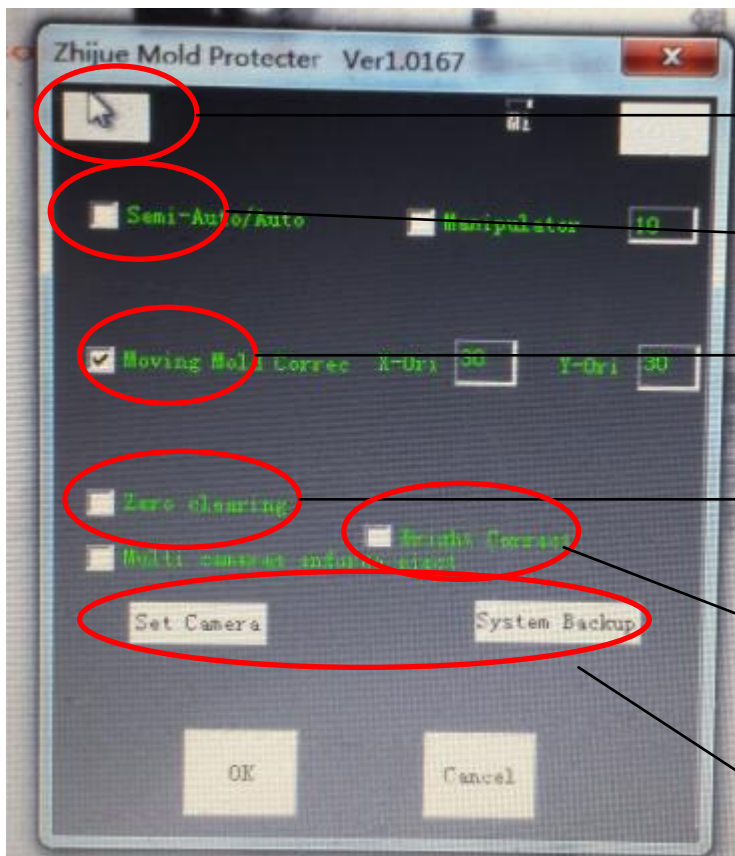


Press setting button.



Set the delay time for camera, time is counted from mold open end.

Mold delay 1 sec means that after mold open end, camera wait 1 sec and take picture.



Two page switch button

Tick it will turn into semi-auto mode

Very important function, it will auto revise the picture different cause by mold open distance

Tick it will set the counting zero.

If sunlight shine to the mold, use this function to revise picture difference

Already set in china, don't use it

If your machine is working semi-auto, then time setting is different. Time counted from safe door close, not from mold open end. So in semi-auto mode, mold delay time you can set 0.

Other function don't use them.

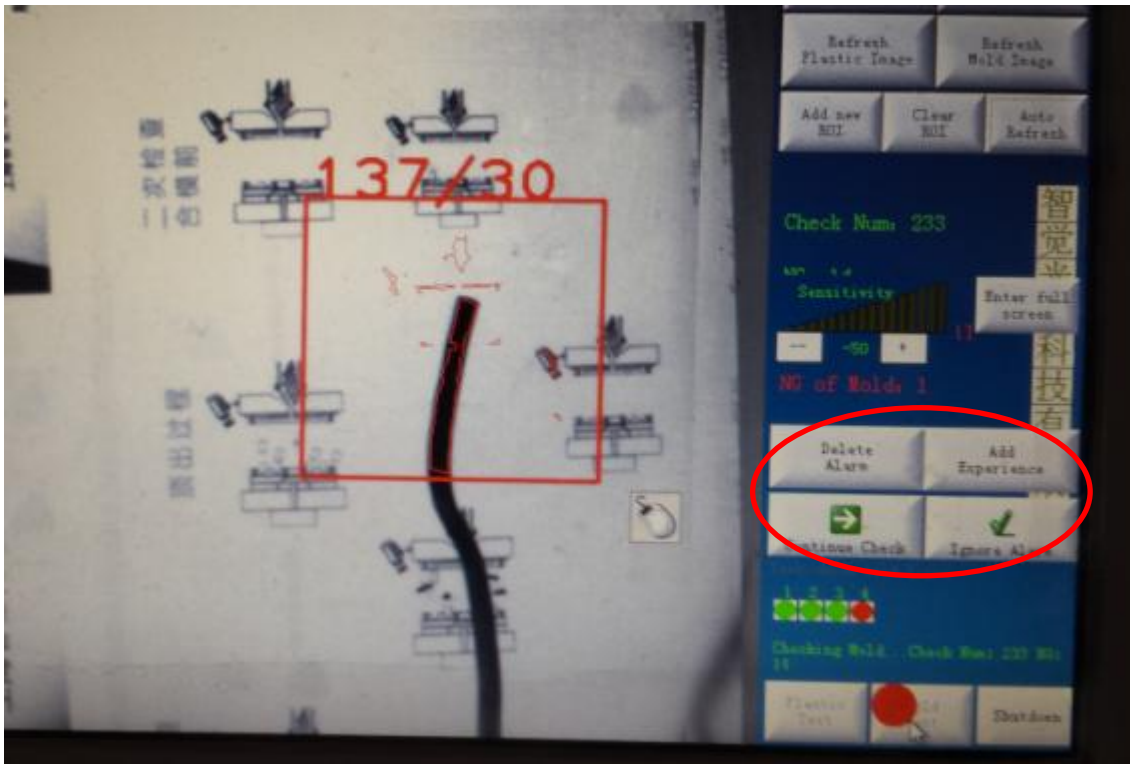
(5) Start working



Add means add another standard picture

Re-check means check again before mold close

4. Alarm handle



When alarm happen, 4 button show in the screen.

“Delete alarm” means you don’t need to check this area, and next if some other thing occur in this area, the system will ignore.

“Add experience” means add this picture as standard picture too, when false alarm happen, use this function.

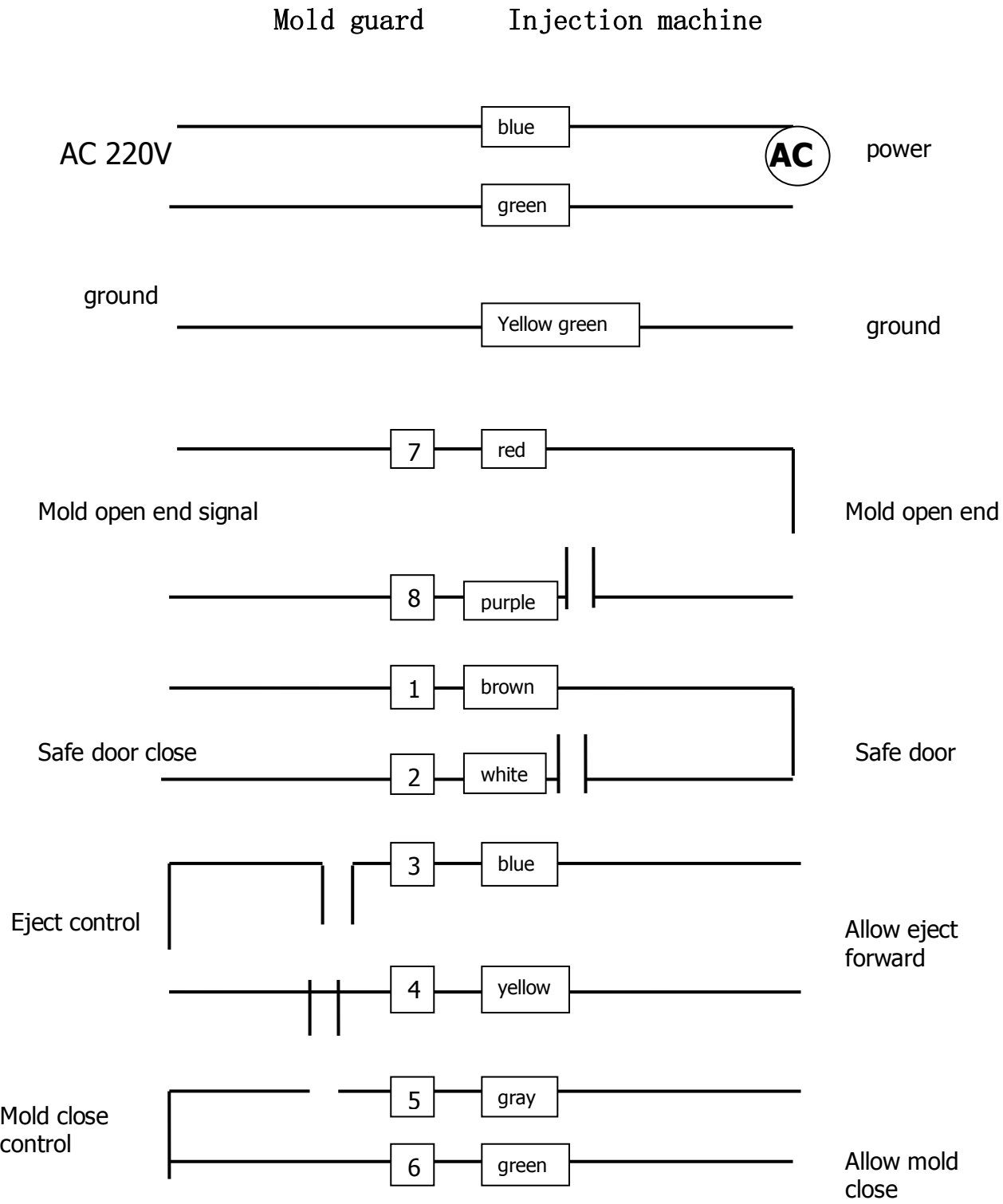
“Continue check” means check again.

“Ignore alarm” means you don’t care this alarm, the mold will close after you press it.

Also you can see the 4 button in the host



Wiring diagram



Error Handle

Error: (1)The camera not working.

(2)Can not enter software.

(3)Detection speed slow down.

(3)Other error

Handle: (1)Re-start the computer, it will fix most problem.

(2) If problem still exist, first exit the software to the Windows desk. Then plug in the USB driver, it will renew the software automatically.

(3) If still not solve the problem, take the picture and send e-mail to zy88@s110.cn, we will help you.